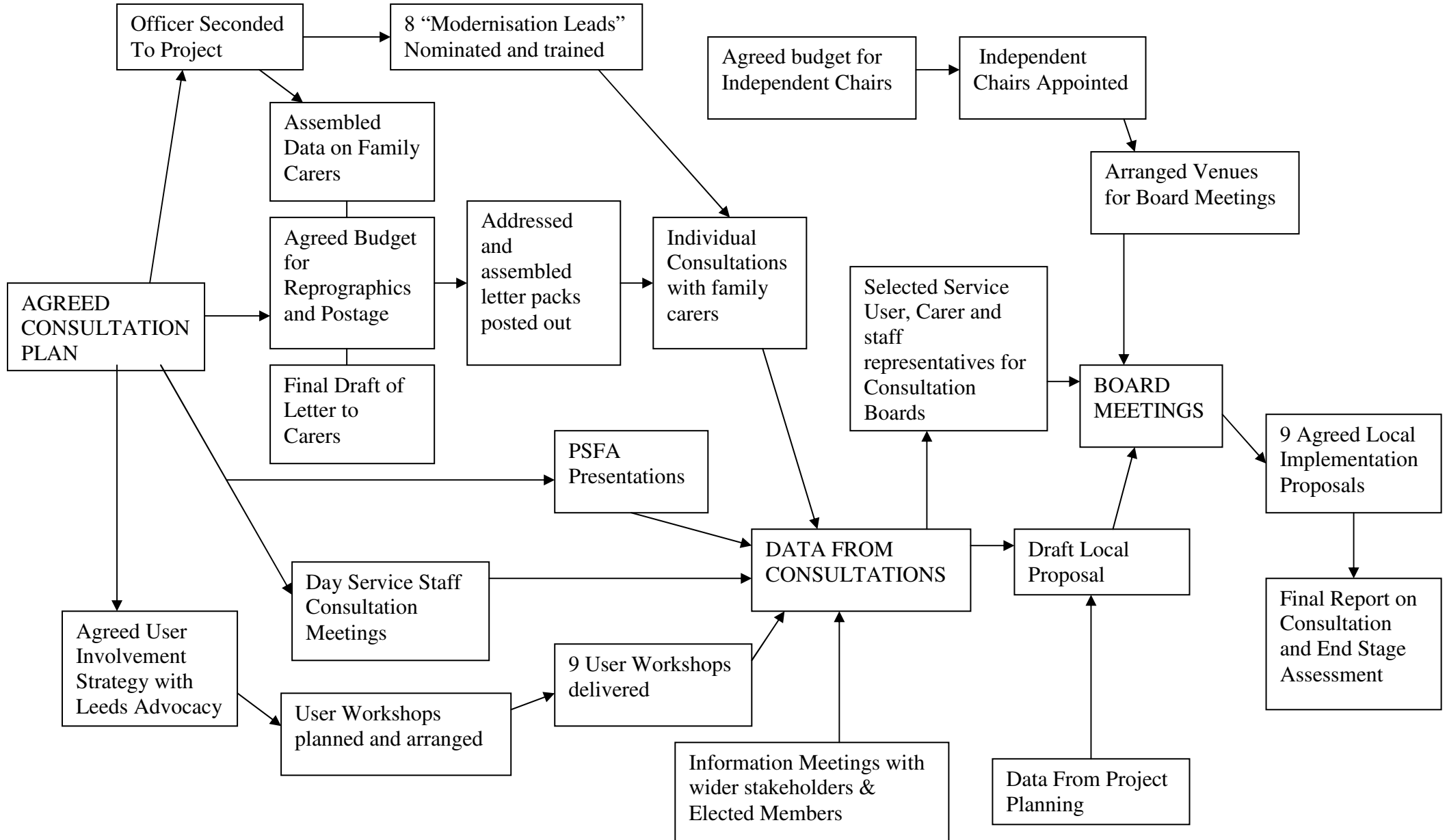


Day Services Modernisation Project : Stage One Plan : Product Flow Diagram



Family Carer Consultation Letter Replies (as of 22/1/07)

Day Service	Number of letters sent / Replies	People happy with us to proceed without further consultation	People wanting a visit but not to be involved in formal consultations	People wanting a visit and to be involved in formal consultations	Percentage of carers who responded
Moor End	78 / 20	8	4	8	24.4%
Wetherby	22 / 9	1	1	7	40.9%
Bramley	64 / 22	14	1	7	34.4%
Horsforth	44 / 20	8	1	11	45.5%

Total number of letters sent : 208

Total number of replies : 71 (34.13%)

% People replied happy for us to proceed	43.66%
% People replied wanting visit for more information	9.85 %
% People replied wanted to be part of formal consultation meetings	46.48 %